

Discover the Royal DIFFERENCE.

Royal RHEF fryers are the most energy-efficient and highest production fryers available in the market!



STANDARD FEATURES:

- All stainless-steel cabinet
- Innovative heat exchanger assembly transfers maximum heat to the oil
- Automatic pilot ignition with 100% safety
- High-efficiency in-shot burners rated at 33,000 BTU/hr each
- Extremely low exhaust flue temps
- Digital Solid State thermostat

RATED TIER 2



RHEF-45

64% Energy Efficient
Idle Rate: 4,569 BTU/hr
Production 71 lbs/hr



RHEF-60

65% Energy Efficient
Idle Rate: 4,963 BTU/hr
Production 95 lbs/hr



RHEF-75

72% Energy Efficient
Idle Rate: 5,017 BTU/hr
Production 129 lbs/hr



All RHEF fryers are available as fryer filter systems

The RHEF Heat Exchanger features state-of-the-art engineering!

RHEF FRYER CONTROL OPTIONS:

- standard digital solid-state thermostat
- two-product solid-state thermostat
- 10-product computer control with individual programming capabilities for temperature and time compensation

Watch the video



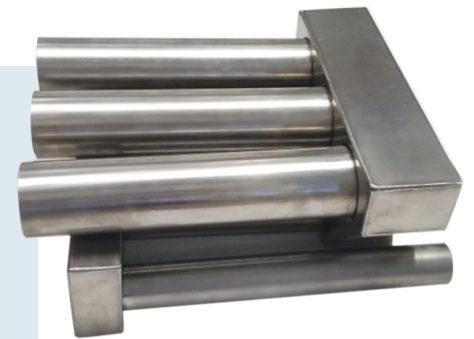
Digital solid state



2-product solid state



10-product computer control



Heat Retention/Air Baffle System

The heat exchanger's 33,000 BTU in-shot burners heat the oil from top to bottom, providing even heat across the cooking area and superior recovery. Its unique design reduces thermal stress, resulting in very low exhaust flue temperatures.

www.southernice.com

Lafayette, Louisiana- 337-235-5813

New Orleans, Louisiana- 504-734-5024 Little Rock, Arkansas- 501-569-9318 Jackson, Mississippi- 601-923-3332

Phoenix, Arizona- 602-470 2366 Albuquerque, New Mexico- 505-247-0330 Houston, Texas- 713-742-9010