

Drop-In Refrigeration





Top-mount refrigeration is flush to the interior.

100% usable storage space

Flush fit ceiling coil design allows full use of walk-in interior for storage.

Quick & cost-saving installation

Top-mount self-contained refrigeration package significantly reduces refrigeration labor costs. Installation is quick and easy and can be completed without the services of a plumber or refrigeration technician. Plumbing is not required. Standard automatic condensate evaporator eliminates need for a drain line on indoor units. Plug and play design.

Design flexibility

Available in cooler, freezer, or combination cooler/freezer. NOW AVAILABLE IN 3/4 HP FREEZER. Top or side-mount refrigeration package configuration.

Outdoor applications

New Roof-curb Technology allows for trouble-free outdoor installation.



Exterior view of roof-curb mounting technology for drop-in refrigeration outdoor installations.

Dependable performance

Refrigeration package is wired and run-tested at the factory.

Parts Coverage

One (1) year from original start up date but no more than fifteen (15) months from ship date RDI will at it's option repair, replace, or reimburse for local purchase of parts or assemblies found to be defective in material or workmanship. Reimbursement for local purchase will require a copy of the wholesale invoice and a maximum 20% markup. During the first year defective compressors shall be exchanged over the counter by the compressor manufacturer's wholesaler.

Labor Coverage

RDI drop-in refrigeration systems are covered by a one (1) year labor warranty for the replacement of component parts which are defective in material or workmanship. The warranty period begins at the earliest of, the original startup date or 60 days after ship date from the factory. RDI reserves the right to pay maximum hourly rates equal to the average commercial hourly rates within that territory or region of the country. See Warranty Statements for complete warranty coverage details and exclusions.

Air Cooled

Medium Temperature (R404A)

Model Number	Dimensions (Inches)			Drain	Weight
	Length	Width	Height		
DC039T2	54-1/2	33	19-1/2	NR*	320
DC049T2	54-1/2	33	19-1/2	NR*	320
DC069T2	54-1/2	42	19-1/2	NR*	375
DC069T3	54-1/2	42	19-1/2	NR*	375
DC099T2	54-1/2	42	19-1/2	NR*	390
DC099T3	54-1/2	42	19-1/2	NR*	390

*Drain line not required on indoor units, outdoor units use 1/2" OD drain line.

Medium Temperature (R404A)

Model Number	HP	BTU/HR +35° F Box Temp	Evap Fan Mtr Amps 115/60/1	Evap Fan Mtr Amps 208- 230/60/1	Cond Fan Mtr Amps 115/60/1	Cond Fan Mtr Amps 208- 230/60/1	Total Amps				Weight	
							115/60/1	208- 230/60/1	208- 230/60/3	460/60/3		Drain
DC039T2	1/3	2925	1.2	—	1.2	—	9.2	—	—	—	NR*	320
DC049T2	1/2	3950	1.2	—	1.2	—	9.6	—	—	—	NR*	320
DC069T2	3/4	6000	2.4	—	1.2	—	15.7	—	—	—	NR*	375
DC069T3	3/4	6000	—	1.0	—	0.5	—	6.8	—	—	NR*	375
DC099T2	1	7250	2.4	—	1.2	—	16.2	—	—	—	NR*	390
DC099T3	1	7250	—	1.0	—	0.5	—	8.5	—	—	NR*	390

*Drain line not required on indoor units, outdoor units use 1/2" OD drain line.

Low Temperature (R404A)

R404A Number	Dimensions (Inches)			Drain	Weight
	Length	Width	Height		
DF064T3	54-1/2	33	19-1/2	NR*	375
DF094T3	54-1/2	33	19-1/2	NR*	470
DF144T3	54-1/2	42	19-1/2	NR*	470
DF194T3	54-1/2	42	19-1/2	NR*	470

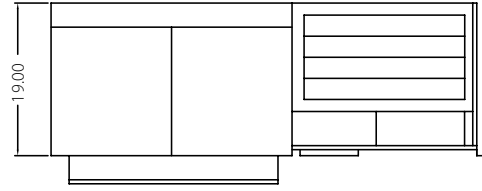
*Drain line not required on indoor units, outdoor units use 1/2" OD drain line.

Low Temperature (R404A)

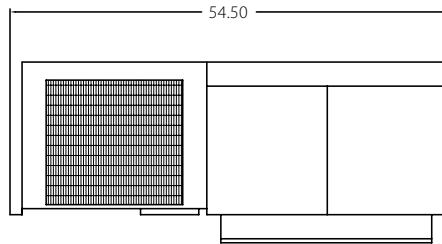
Model Number	HP	BTU/HR -10° F Box Temp	Evaporator 208-203/60/1		Cond Fan Mtr Amps 208- 230/60/1	Total Amps				Weight
			Mtr. Amps	Mtr. Amps		208- 230/60/1	208- 230/60/3	460/60/3	Drain	
DF064T3	3/4	2570	0.5	4.3	0.5	6.6	—	—	NR*	375
DF094T3	1	4250	0.5	4.3	0.5	10.9	—	—	NR*	470
DF144T3	1-1/2	6230	1.0	5.8	1.1	14.0	—	—	NR*	470
DF194T3	2	7700	1.0	5.8	1.1	19.3	—	—	NR*	470

*Drain line not required on indoor units, outdoor units use 1/2" OD drain line.

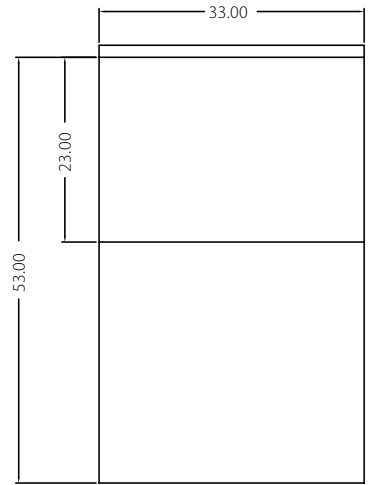
1 Fan EVAP



FRONT VIEW

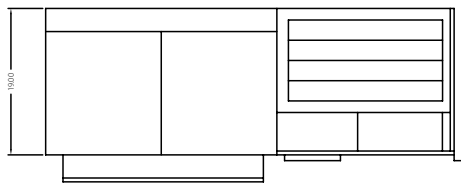


REAR VIEW

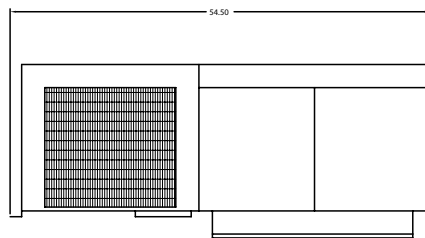


TOP VIEW

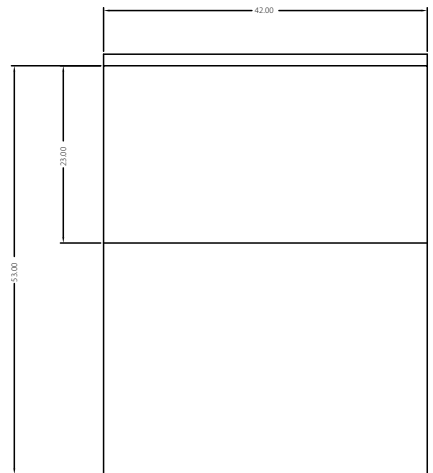
2 Fan EVAP



FRONT VIEW



REAR VIEW



TOP VIEW



SOLUTIONS

RDI provides many of the operational solutions from Maniowoc Foodservice, a global company dedicated to bringing value to foodservice operators by equipping them with highly individualized real-world answers that enhance menus, service, profits and efficiency.

To learn how Maniowoc Foodservice and its leading brands can equip you, visit our global web site at www.manitowocfoodservice.com then find the regional or local resources available to you.

