

## Digital Cabinets Pizza Preparation Table, 24 CU.FT - Stainless Steel

ITEM # \_\_\_\_\_

MODEL # \_\_\_\_\_

NAME # \_\_\_\_\_

SIS # \_\_\_\_\_

AIA # \_\_\_\_\_



**738065 (KCPT92.12-HC)** 3-door pizza preparation table, 24 cu.ft, +33/+41°F, stainless steel

### Short Form Specification

Item No. \_\_\_\_\_

Constructed entirely of stainless steel. Built-in refrigeration unit and an insulated lid to maintain food freshness. Fin & Tube Condenser improves performance in high-temperature environments.

Full-depth cutting board of 79x91.81x19.53 in.

Digital control panel, Vinyl-Coated Steel adjustable shelves, removable door gaskets and self-closing doors with 90-degree stay-open feature.

Temperature range: +33/+41°F.

R290 gas in the refrigeration circuit.

ETL Safety and Sanitation certifications.

3/5 Years warranty.

### Main Features

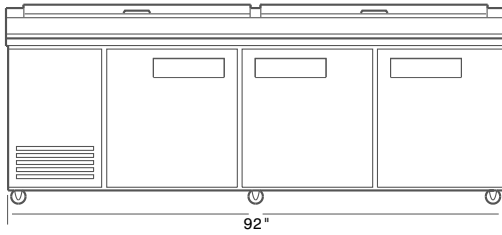
- Fin & Tube Condenser improves performance in high temperature environments.
- 1/4 HP Compressor.
- Vinyl-Coated Steel adjustable dividers to customize bottle storage effortlessly.
- Hydrocarbon refrigerant gas R290 for the lowest environmental impact (GWP=3) - CFC and HCFC free.

### Construction

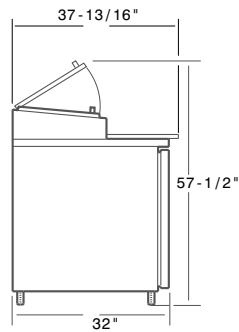
- Stainless steel exterior and interior, durable and easy to clean for daily commercial use.
- External Electronic Digital Temperature Control for easy setting and monitoring.
- Removable door gaskets.
- Holds 12 1/3 pans.
- Self-closing door with 90-degree stay-open feature.
- Heavy duty casters.
- Insulated lid maintains food freshness.
- Preparation area designed for work station convenience and self food handling, also thanks to the full-depth cutting board.

APPROVAL: \_\_\_\_\_

**Front**

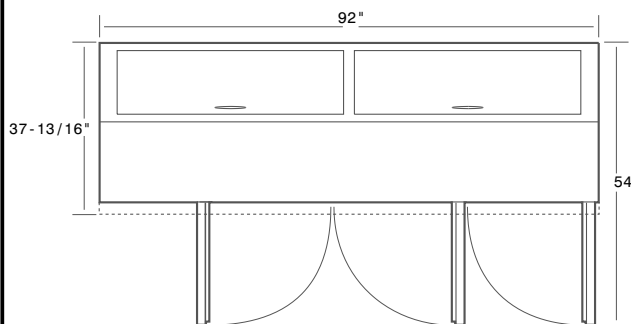


**Side**



**EI** = Electrical connection  
**RI** = Refrigerant Inlet  
**RO** = Refrigerant Outlet

**Top**



## Electric

Supply voltage:	738065 (KCPT92.12-HC)	115 V/1 ph/60 Hz
Electrical power, max:		1.207 kW
Plug type:		NEMA 5-15

## Key Information:

Gross capacity:	1020 lt
Capacity (Cu.Ft.)	24.0
Door hinges:	1 Left+2 Right
External dimensions, Width:	92 " (2336.8 mm)
External dimensions, Depth:	37 13/16" (960.4375 mm)
External dimensions, Height:	42 13/16" (1088 mm)
Number and type of doors:	1 Full
Number and type of grids (included):	3 -
Type of external material:	Stainless Steel
Type of internal material:	304 AISI
Warranty:	3 / 5 years

## Refrigeration Data

Compressor power:	1/4 hp
Refrigerant type:	R290
Operating temperature min.:	33.01 °F
Operating temperature max.:	41 °F
Condenser type:	Fin & tube
Automatic defrost cooling system:	X
Defrost type:	Auto Defrost

